

Bi-Weekly Newsletter

November 12 - November 26, 2021



[Our Online Fundraising Events kick off next Monday!](#)

In lieu of the in-person annual fundraising Gala, which we had to cancel two years in a row, we are launching a variety of online fundraising programs starting with the online auction on Monday. Read below about some of the very special fundraising programs we are planning and check our [website](#) often for ways to participate in our fundraising efforts ! If you would like to make a [financial gift now](#), we thank you!

Now open for registration!

November 13rd
[Ouchigohan Part 2 Nikujaga](#)

November 19th
[Language Room](#)

December 2nd
[Shikoku Pilgrimage](#)

Read more about all our events below!

[JSB meets JET Alumni](#)



Check out our latest interview with JET alumni, [Lily Sun](#). Lily was an ALT in Nanao, in **Ishikawa** prefecture. Ishikawa is home to one of Japan's most beautiful gardens: Kenrokuen in Kanazawa. Read more about Lily's JET experiences below and on our [website](#)!

Featured Events & Programs



[Ouchigohan!](#)
[Part 2: Nikujaga](#)
Saturday, November 13, 2021
4:00 PM CST | 5:00 PM EST



[Shikoku Pilgrimage](#)
Thursday, December 2, 2021
6:00 PM EST



Upcoming Fundraising Events:

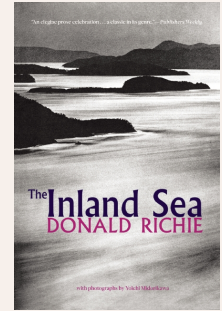


Our Online Auction Opens Monday!

Find unique gifts in our online auction that opens on Monday. Our auction will run from 11/15 to 12/15 and new items will be added every week so check back often!

Check our [website](#) on Monday at 12pm to get the link!

Special Online event!
Celebrating 50th Anniversary of Donald Richie's *The Inland Sea*
a conversation between Roland Kelts and John Nathan,
moderated by Peter Grilli



Save the Date:
Wednesday, December 8, 2021
7:00PM EST



Holiday Extravaganza with the Kenzo Estate

Friday, December 10, 2021
7:00PM EST

The Japan Society of Boston is partnering with the renowned Kenzo Estate in Napa, CA for an online experience of their three signature wines. With vineyards cultivated by celebrated viticulturist David Abreu, and wine artistically crafted by world-renowned winemaker Heidi Barrett, Kenzo Estate's wines are celebrated all over the world. Join us in what promises to be a magical night and support us in this important fundraiser!

[Register Here](#)

Japan Society of Boston Featured Online Events

□□□□□□(Ouchigohan): Japanese Home Cooking with Table for Two in Atlanta, Boston, & Houston

in collaboration with The Japan-America Society of Houston
and The Japan-America Society of Georgia

Part 2 | Let's Make "Nikujaga"
Saturday, November 13, 2021
5:00 - 6:00 PM EST / 4:00 - 5:00 PM CST



Ouchigohan!

おうちごはん！

PART II: Let's Make

NIKUJAGA

NOV 13 4PM CST 5PM EST via ZOOM

\$10 JASH/JASG/JSB Members | \$15 Non-members

a special collaboration: JAPANESE HOME COOKING with TABLE FOR TWO in Houston, Atlanta and Boston!

Wa-Shokuniku learn, cook, eat Japanese! TABLE FOR TWO 日本料理協会 日本社会 日本社会 BOSTON

Join us for Part II of the series as we make nikujaga, Japanese-style simmered beef and vegetables. This popular one-pot dish is a staple in Japanese households as well as for kyushoku meals in schools. The combination of slightly sweet and salty flavors makes it a tasty favorite. Learn special cutting and cooking techniques, along with classic Japanese seasonings that make this one of Japan's quintessential comfort foods. Serve with a refreshing salad made from Napa cabbage and clementines and add a bowl of rice for a quick, healthy and tasty meal!

Save the date!

Part 3: Matcha Marble Cake and Matcha Latte
Saturday, December 11, 2021 | 5PM EST/4PM CST

[Register](#)

Shikoku Pilgrimage

Thursday, December 2, 2021 | 6 PM EST

in collaboration with Japan Society Canada



The Shikoku Pilgrimage is the most important pilgrimage in Japan, and one of the few circular pilgrimage routes in the world. Created by Kobo Daishi - the founder of Shingon Buddhism, the 1,200 kilometer trail connects some 88 temples along the perimeter of the island of Shikoku,

and has from its conception become an important passage for personal reflection, spiritual healing, and the custom of charitable giving known as o-settai.

Join us for this special presentation as author and photographer, John

Lander, takes us through idyllic landscapes and stunning temples to share the origins and stories of this sacred trail, documented in his most recent publication *The Shikoku Pilgrimage - Japan's Sacred Trail*, and learn why so many people devote themselves to undertaking the pilgrimage year after year.

[Register](#)

Japan Society of Boston Recurring Online Events

The JSB Language Room Virtual Language Exchange

Friday, November 19, 2021 | 6:00 - 8:00 PM EST
11 20 8 10



Hosted online via Zoom

(you will be sent the meeting code upon registering)

The theme for this exchange: Art

Practice your Japanese or your English at our next online language exchange! Join us for two hours of conversation

where you will be grouped based on your proficiency level. We will begin speaking in Japanese, followed by English. We will conclude the meeting with free, casual conversation in Japanese and/or English until we hit 8 PM.

The JSB Language Room is currently free for all. To help us continue offering our language exchange, please consider [making a donation](#) or [becoming a member](#) today!

[Register](#)

Notes from JSB

JSB Meets JET Alumni

As part of our partnership with the [United States-Japan Exchange & Teaching Alumni Association](#) (USJETAA), we will be sharing excerpts of interviews with JET alums in our newsletter!

Episode 22: Ishikawa



What sparked your interest in applying for the JET program?

I really loved studying Japanese and my professor talked about it once in class. I really wanted to live in Japan someday and I thought it was a good opportunity. At the time when I decided to apply, I had recently finished my bachelor's degree and was working two unfulfilling part-time jobs and thought it was the best time for me to apply and try to fulfill a lifelong dream. It was an unbelievable and unforgettable experience.



What are some of the things your prefecture is known for? Ex. food, hotspots, etc.

Ishikawa Prefecture has great seafood, and Kanazawa, its capital, is very well-known for gold leaf. One of the three most beautiful Japanese gardens is in Kanazawa: Kenrokuen. In the winter, the trees in Kenrokuen are tied with ropes to form conical forms to preserve the branches from heavy snow. Kanazawa also is still famous for the Tsuzumimon located in front of Kanazawa Station, part of Hokuriku Shinkansen line which opened in 2015. Nanao City itself has Wakura, which is a popular onsen area. In the deep Noto, in the city of Wajima, there is Senmaida, a thousand rice paddies set against the seaside. In early fall, there are beautiful artificial lights that illuminate the rice paddies. You can visit at nighttime. Down in the south, Kaga Yuzen is a specific way of dying fabric.

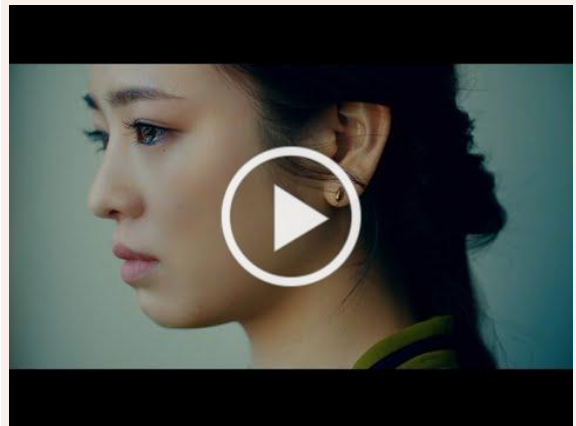
[Read the rest of Lily's interview!](#)

JSB Staff Song of the Week

▣ Irokousui ▣

by **Kamiyama Yoh**,
a Japanese singer - songwriter

Kamiyama Yoh, aka Yukisan, is a newcomer within the JPop genre. Their song *Irokousui* was featured as the opening in a widely popular 2020 rom-com anime adaptation of *Horimiya*.



Online Events by other Japan Societies



Deconstructed Kimonos

The Japan America Society of Chicago
Thursday, November 18, 2021
7:00 PM - 8:00 PM EST

Japanese American artist Na Omi Shintani explores her heritage and loss of it through altering and honoring kimonos.



GREAT POWER COMPETITION IN THE INDO-PACIFIC: IMPLICATIONS FOR U.S.- JAPANESE REGIONAL LEADERSHIP

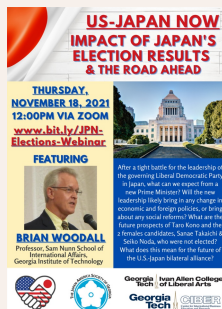
The Japan-America Society of

The process of deconstruction is a sacred and meditative act with striking and sometimes shocking results.

Na Omi Judy Shintani's art focuses on remembrance, connection, and storytelling. She makes assemblages, produces installations, creates performances, and facilitates social engagement activities to generate visual stories that bring vital issues to light.

Shintani has exhibited internationally. She received a fellowship at Vermont Studio Center and was an artist in residence at Santa Fe Art Institute and at Creativity Explored in San Francisco. She was awarded the Peninsula Arts Council 2012 Award for donor support for her Coastside Artists for Doctors Without Borders project. She speaks about Japanese American Art and historical trauma at venues including SF State, De Anza College, ArtXchange in Seattle, Center for Contemporary Art Santa Fe, and 516 Arts in Albuquerque.

[Learn More](#)



US-Japan Now: Impact of Japanese Elections Webinar & the Road Ahead

**The Japan-America Society of
Georgia**
Thursday, November 18, 2021
12:00 PM EST

After a tight battleship for the leadership of the governing Liberal Democratic Party in Japan, what can we expect from a new Prime Minister? Will the new leadership likely bring in any change in economic and foreign policies, or bring about any social reforms? What are the future prospects of Taro Kono and the 2 female candidates, Sanae Takaichi & Seiko Noda, who were not elected? What does this mean for the future of the U.S.-Japan bilateral alliance?

Featuring Professor Brian Woodall, Professor of Sam Nunn School of International Affairs, Georgia Institute of Technology.

Washington DC
Thursday, November 18, 2021
4:30 PM - 8:00 PM EST
(Online and In Person)

The United States-Japan Alliance has served to underpin security in East Asia, leading to over a half century of relative stability and prosperity in the region. However, China is increasingly challenging the existing rules-based regional order and competing for influence across multiple dimensions.

On November 18th 2021, the Japan-America Society of Washington DC and the National War College will host the seventh annual Japan-U.S. Military Program event in partnership with the National War College Alumni Association, the National Association of Japan-America Societies, Sasakawa USA and the Japanese Embassy. Great Power Competition in the Indo-Pacific: Implications for U.S.-Japanese Regional Leadership will explore ways in which the United States and Japan can work together, and with others, to maintain a free and open Indo-Pacific region in the face of these new challenges.

[Learn More](#)



Gateway to New Horizons - Ontario

The Japan Society Canada
Thursday, November 18, 2021
7:00 PM - 8:30 PM EST

"Gateway to New Horizons - Investment Opportunities in Canada", co-hosted by the Japan Society, Invest in Canada, JETRO Toronto and sponsored by Torys LLP, is designed to showcase Canadian investment opportunities and Canada's Supercluster Initiatives to Japanese investors.

Speakers to be announced shortly.

[Learn More](#)

[Learn More](#)

Online Events by Non-Japan Societies



The Japan Foundation presents
A Portrait Of A Noh Theatre
YARAI NOGAKUDO - 矢来能楽堂
An Online Talk by Yoshimasa KANZE



A Portrait Of A Noh Theatre - Yarai Nogakudo

by Japan Foundation London

Tuesday, November 16th
7:00 AM EST

Nogakudo, or Noh theatre, is the place where Noh and Kyogen plays are performed and, as in an ordinary theatre, it has a stage, backstage and auditorium. Before the end of the Edo era (19th century), the Noh stage was usually set up outdoors but with the modernisation of society, many house-style Noh theatres have been built all over Japan. One of the oldest and most prominent theatres in Tokyo is the 'Yarai Noh Theater' (Yarai Nogakudo) which was originally built in Yarai-cho, Shinjuku-ku, in 1930 and reconstructed in 1952. In this online talk, in the lead up to the 70th anniversary of the reconstruction, KANZE Yoshimasa – the latest generation of the KANZE family that owns the Noh theatre – looks back at the historical transition of this cultural property, explaining some features of the theatre life that may not be written down in books.

[Learn More](#)

Taking Historical Craftsmanship Into the Future: Environment and the Art of Urushi

Kyoto Consortium for Japanese Studies

Thursday, November 18th
7:00 - 8:30 PM EST

Today, historical craftsmanship is being steadily erased as mass consumerism has become the status quo of modernity. Along with it, old forms of sustainability, in which objects were repaired continuously and used for decades if not generations, have also been replaced by cheap consumption and manufacturing. This presentation will explore these issues as well as potential solutions through the art of Urushi, a traditional Japanese lacquer, which has been used for approximately 10,000 years. Featured is the project 'Urushi x Alaia', in which Mr. Tsutsumi worked with Tom Wegener to create an urushi surfboard, bridging everyday activities and ancient craft. This is also a rare opportunity to tour a 111-years-old urushi-refining workshop in the heart of Kyoto.

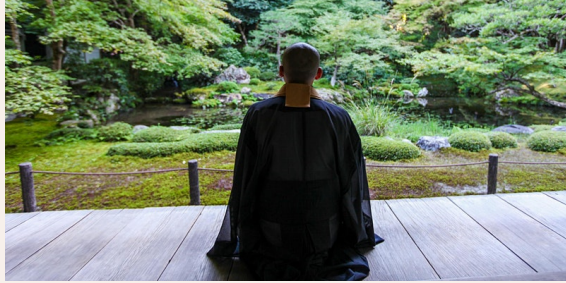
Speaker

Mr. Takuya Tsutsumi (Tsutsumi Asakichi Urushi-Ten)

Language used

Japanese with an English interpreter

[Learn More](#)



Introduction to Buddhism, Part 6, Buddhism in Japan

by American Buddhist Study Center

Saturday, November 20th

1:00 - 2:00 PM EST

Professor Aaron Proffitt will talk about the different Buddhist practices in Japan. He will cover their history, traditions, and how they each played a significant role in the Japanese culture.

[Learn More](#)



The Importance of Diversity: Recognizing the Hurdles to Achieving Change

by Center on Japanese Economy and Business, Columbia Business School

Monday, November 22

8:00 – 9:00 PM EST

Featuring: **Kimi Onoda**, Member, House of Councillors, The National Diet of Japan
Moderator: David E. Weinstein, Director, CJEB; Carl S. Shoup Professor of the Japanese Economy, Columbia University

[Learn More](#)

Additional Resources

Japanese study resources

[Tofugu: Learn Hiragana](#)

[Tofugu: Learn Katakana](#)

[WaniKani](#)

[Tae Kim's Guide to Learning Japanese](#)

[Learn Japanese with Erin](#)

[NHK-World Japan: Easy Japanese Grammar](#)

[How to Read and Write Hiragana](#)

Google Arts & Culture Virtual Museum Collections

[Tokyo National Museum](#)

[The National Museum of Modern Art, Tokyo](#)

[Kyoto National Museum](#)

[Fukuoka Asian Art Museum](#)

[Yamatane Museum of Art](#)

[Adachi Museum of Art](#)



The Japan Society of Boston, Inc. | [\[www.japansocietyboston.org\]](http://www.japansocietyboston.org)