

Bi-Weekly Newsletter

May 25 - June 7, 2020



Now open for registration!

[Theme-based Online Japanese Classes](#)

[5/29 Virtual Japanese/English Language Exchange \(Participants from US & Japan!\)](#)

[5/30 Easy Japanese Home Cooking for the Non-Chefs \(Omurice\)](#)

[Ongoing: Shukudai Club](#)

JSB Staff Pick of the Week

With more time at home, we've asked our staff to pick some of their favorite Japanese movies and books. Here's the staff pick of the week:



[N no tameni \(2014\)](#)

Four college students end

up at the scene of a murder. One of them, Nishizaki, confesses the crime and gets arrested at the scene. Ten years later, a former police officer decides to find out the truth behind the murder.

Japanese title: N□□□□

[IMDb page](#)

Join or Renew Your Membership

The Japan Society of Boston is a community of bridge makers and curious minds who have found connections with others through their common interest in strengthening the ties between the US and Japan.

Join or Renew your Membership and support us continue this important work of bridge making!



Japanese of the week:

□□□ (□□□):
"baeru"

"□□□ (baeru)"
comes from "□□□□

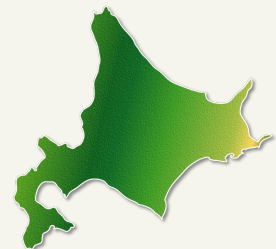
□□ (Insuta-bae)" which means to stand out on Instagram. It was made into a verb by adding "-ru" and now is used to refer to something that looks so stylish that you want to take a picture and then post to share with everyone. "□□□" was selected as the No. 1 New Japanese Word for 2018 by the major Japanese dictionary publisher, Sanseido.

The Japanese often create verbs by adding "-ru" to nouns. For example, "□□□□ panikuru□" means to panic; "□□□□ guguru□," to search on Google; "□□□□ amazoru□," to shop on Amazon; and "□□□ (tapiru)," to drink Tapioca drinks. It is interesting to look at the Buzzwords of the Year to see how the Japanese language is constantly evolving.

Send us your □□□ (baeru) picture or video from Japan to be used in our Virtual Trip to Japan we're creating! See details below.

Facts about Hokkaido

Honoring the 30th
Anniversary of the
Massachusetts - Hokkaido
sister state relationship



Did you know Sapporo is where lager beer production started in Japan? During the Meiji Period, Japan started to adopt western culture, including beer. The government established the Kaitakushi Beer Brewery, the predecessor of Sapporo Beer, in Sapporo in 1876 because Hokkaido already had wild hops, and its climate was perfect for barley growing and low temperature fermentation. If you like beer, Hokkaido is the place to go during the

[Join Now](#)

Sapporo Summer Festival, whether to taste many kinds of beer at the world's largest beer garden, or learn about the history of beer at the Sapporo Beer Museum.

Keep up with JSB on social media!



For more interesting facts about Hokkaido, sign up for our theme-based program, "Not just Tokyo and Kyoto!" class for intermediate/advanced learners on May 27th.

Join us in Creating a Virtual Trip to Japan!

JSB's Original Virtual Trip to Japan

We've heard from so many of you that you have had to cancel your trip to Japan this summer. To bring us all closer to Japan and to each other, join us in this production of a virtual trip to Japan by sending us your pictures or videos of your travels in Japan.

We will string together all of our collected memories into one, which will be presented in a video format in our August newsletter!



Send to: info@japansocietyboston.org

Please make sure you include the name of the place where the picture or video was taken as it will help us in the editing process.

When you submit content to JSB, you simultaneously grant JSB an irrevocable, worldwide, royalty free license to publish, display, modify, distribute and syndicate your content worldwide. You confirm and warrant that you have the required authority to grant the above license to JSB.

Vitamins for the Soul



Joanne was born and raised in Singapore, she came to school in the US in 1985 and stayed. Educated and trained as an attorney, she however, prefers flowers to law.

As a professionally trained floral designer she switched to Japanese flower arranging twenty years ago and she has been teaching for fifteen years. She is a perennial exhibitor in the New England/Boston Flower Show and did the MFA Art in Bloom for many years for her Garden Club. For the past 9 years, she has done the stage arrangement for the Japanese Emperor's Birthday Reception. She

Ikebana Demonstration with Joanne Caccavale

Director of the Boston Chapter of the Sogetsu School and past President twice of Ikebana International Boston Chapter, Joanne Caccavale kindly put together an online Japanese flower arrangement demonstration using flowers from her own garden.

Click on the link below for a moment of calm and beauty and provide some vitamins for your soul!

teaches at home in her studio, at
Massachusetts Horticultural Society and is
scheduled to teach at DeCordova.

[View Here](#)

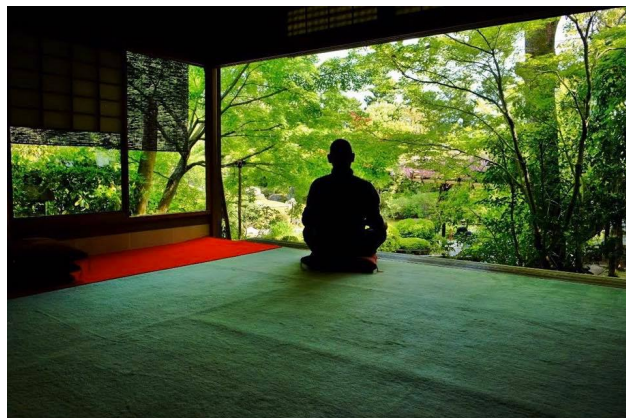
[Zazen meditation at home](#)

[with □□□□□□](#)

We're sharing with you again, the video that Rev.
Daiko Matsuyama, deputy priest of Taizo-in
Temple (□□□□□□) in Kyoto sent to us.

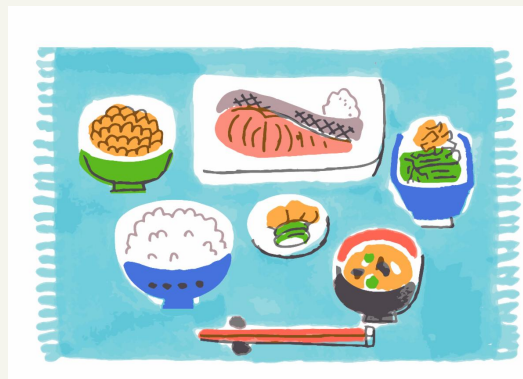
**Learn how to meditate Zazen style with
this introduction and lesson.**

[View Here](#)



Japan Society of Boston Online Events

[Easy Japanese Home Cooking for the Non- Chefs!](#)



[Saturday, May 30, 2020 \(Omurice\)](#)

5:00 - 7:00 PM

Hosted online via Zoom

**(you will be sent the ingredient list and meeting code a few days
before the event)**

We asked and you voted!

Join Yuko, our Managing Director and a mom of two, in the kitchen to make
omurice (□□□□□), Japan's loved dish on Saturday, May 30th!

[Read More](#)

[Theme Based Online](#)



Japanese classes

Would you like to learn about Japanese food or interesting places in Japan while learning Japanese? We're offering a series of theme based Japanese online classes starting in May. This is a great opportunity for people who would like to learn about Japan while studying Japanese – or even people who aren't sure about taking a structured 12-week Japanese course but would like to practice Japanese conversation.

Each class has two levels: Beginners and Intermediate/Advanced.

Choose from 4 different exciting themes

- Like Japanese Food? Learn Japanese through Cuisine!
- Not just Tokyo and Kyoto. Discover Japan that even the Japanese may not know!
- Japanese in Manga
- The Japanese Writing System: Not as Scary as It Seems!

Reach out to us [here](#) for further inquiries.

Newly added!



“Like Japanese Food? Learn Japanese through Cuisine!”
Wednesday, June 17th at 7PM –
Beginners (Newly added!)



“Japanese in Manga”
Saturday, June 6th at 10AM -
Beginners (Newly added!)
(Open to high school students and up.)

[Read More](#)

Shukudai Club

Hosted online via
Zoom Meetings
(you will be sent the
meeting code after
registering)



Do you need support with your Japanese homework or want to brush up your Japanese over the summer? The Japan Society of Boston has the solution for you!

We're offering Online Japanese Semi-group Lessons to support you. Come join with your friends and take advantage of our service!

For more information email us at
language@japansocietyboston.org

Read More



Virtual Japanese/ English Language Exchange

Friday, May 29th
6:00 to 8:00 PM

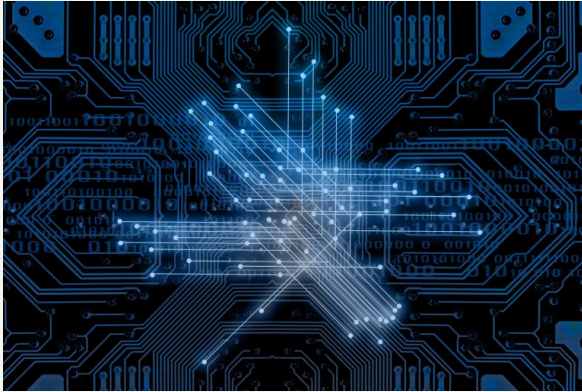
Hosted online via Zoom Meetings
(you will be sent the meeting code after registering)

Our language gatherings have been growing so expansive that we now have **participants all the way from Japan!** This really ties into our mission of being the bridge between Japan and the US. Come join for 2 hours of conversation based on your level of proficiency and be a part of our **community!**



Thursday, June 4th 5:00 to 6:00 PM

(Starts at 6:00 PM EST)



How Technology Companies in the U.S. and Japan are Responding to the COVID-19 Crisis

[Read More](#)

COVID-19 has created new opportunities to instantly interact with people thousands of miles away, however cultural and physical distinctions can also create new challenges. Access to a reliable internet connection, a society's acceptance of remote work, and even the size of a home can all play a role in how employees and their families adjust to life during COVID-19.

Companies in the information technology and telecommunications industries are at the heart of this dilemma – how to provide important services around the world, while also responding to rapidly-changing requirements, customers' concerns, and unique country environments. In this webinar, we will discuss how Japanese and American firms are using their expertise to address current societal needs, how working from home and returning to work are different in Japan and the U.S., and how COVID-19 is impacting our immediate future.



THE JAPAN-AMERICA SOCIETY
OF WASHINGTON DC



The US and Gas Market Challenge Facing Japanese Business: Covid 19 x Factor

Tuesday, June 9th from 9:00 AM

The fracking revolution that began a decade ago has drastically altered the geography and economics of global energy supplies. This revolution has led to a renaissance in oil and gas/LNG investment that few could have foreseen. The COVID-19 crisis has presented another severe—and unpredictable—disruption that has led to an unprecedented drop in the global oil and gas/LNG market. A drop this precipitous and sudden is unprecedented in the history of the energy industry worldwide. Join Japan-America Society of Washington DC for a moderated discussion with American and Japanese experts on energy business and governance.

[Read More](#)



[3](#) from JWLI

Thursday, May 28, 2020 from 08:00 pm to 09:30 pm
(Please note date and time is in Tokyo time, time in EST is 7:00 AM)

-This program is in Japanese only but anyone is welcome to join-

from JWLI Japanese Women's Leadership Initiative JWLI

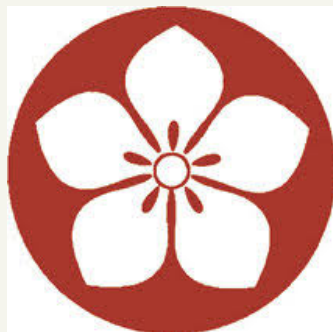
3 4

WHO

- JWLI Bootcamp
- JWLI Boston
- JWLI Boston NPO PIECES
- JWLI Boston

[Read More](#)

JWLI ECOSYSTEM



[NCTA at TEA Summer Movie Nights](#)

Watch film in advance and then join Zoom live for discussion.

[Godzilla \(Gojira, 1954\)](#)
June 24, 7-8pm ET

[Your Name \(2016\)](#)
July 14, 7-8pm ET

The National Consortium for Teaching about Asia

[Virtual Tour of Makidou Cavern!](#)



Makidou Cave is about 450 m long limestone cavern with an underground lake covering the back of the cave. Designated as a Natural Monument of Okayama Prefecture, the cavern features brightly colored and beautifully illuminated variegated terrain that includes stalactites as well as an underground lake.

[Visit Here](#)

☐ Free



[MOOSIC LAB x Japanese Film Festival](#)

MOOSIC LAB and Japanese Film Festival launched a free streaming service for recent Japanese indie movies in March. Discover a new generation of creators from Japan.

[Read More](#)



[Google Arts & Culture](#)

[Google Arts & Culture Virtual Museum Collections](#)

[Tokyo National Museum](#)

[The National Museum of Modern Art, Tokyo](#)

[Kyoto National Museum](#)

[Fukuoka Asia Art Museum](#)

[Yamatane Museum of Art](#)

[Adachi Museum of Art](#)

Japanese study resources

[Tae Kim's Guide to Learning Japanese](#)

[Aozora Bunko](#) (in Japanese)

[Learn Japanese with Erin](#)

[NHK-World Japan: Easy Japanese Grammar](#)

[NHK-World Japan: Easy Japanese Conversation](#)



[NHK-World Japan: Japan Easy](#)

[NHK-World Japan: News Web Easy](#)

[How to Read and Write Hiragana](#)

[The Japan Society of Boston, Inc.](#) | [\[www.japansocietyboston.org\]](http://www.japansocietyboston.org)

