



THE JAPAN SOCIETY OF BOSTON
A BRIDGE BETWEEN CULTURES

Monthly Newsletter



Please View Entire Message in your Email to see all of what we have to offer in our newsletter!



Moni Miyashita

Managing Partner

[Beacon Hill Strategy Group](#)

[pictured right with JSB Executive Director,
Naoko Takayanagi]

How long have you been working in Boston?

I have been working in Boston for the past ten years. Before founding Beacon Hill Strategy Group, I served as EVP and Chief Strategy Officer at Valo Health, an AI-driven drug discovery and development company. Over 5.5 years, I helped build Valo from a startup concept with the founder to a strategic player in the biotech industry including partnerships with Novo Nordisk (the world's second-largest pharmaceutical company) and Charles River Laboratories (the largest preclinical research organization)...




What do you do?

I recently co-founded [Beacon Hill Strategy Group](#) with my partner, Winston Larson. Our firm helps executives develop AI-driven business strategies by focusing on their biggest opportunities, competitive strengths, and customer value creation. We guide leaders in defining their AI vision, rethinking value creation, and building capability roadmaps to accelerate AI adoption.

In addition, with over 25 years of experience in M&A leadership, including 125 acquisitions at IBM and advising global CEOs at McKinsey & Co, we provide end-to-end support for M&A strategy, execution, and integration. We also help companies build internal M&A capabilities to ensure long-term success.

Click [here](#) to read the full interview!

Announcements from JSB



The banner features a yellow background with abstract shapes. On the left is the logo for the Japan Society of Boston, which includes the Japanese characters '協日会本' and 'JAPAN SOCIETY OF BOSTON'. In the center, the text '2025 MASSACHUSETTS HOKKAIDO DESIGN CONTEST' is written in large, bold, yellow letters. To the right is a blue baseball cap with a colorful circular logo and the text 'YOUR LOGO' on it. A yellow megaphone icon is positioned to the left of the main text. Below the main text, the deadline 'Deadline: 11:59PM ET, March 15, 2025' is displayed.

We are excited to announce our 2025 Massachusetts Hokkaido Design Contest, open now through March 15. A winning design will be embroidered on baseball caps available for purchase to fundraise for JSB.

We are holding this contest to celebrate the 35th anniversary of the Massachusetts-Hokkaido sister state/prefecture relationship. The contest is open to all ages and multiple entrees are allowed. The top designs will be nominated by JSB, and then the final design will be chosen by popular vote. The winner of the contest will be featured and will receive a free hat with their design!

Submission deadline: March 15, 2025, 11:59PM ET

Submit designs and questions through email to: joanneha@japansocietyboston.org

[Details](#)

FUNDRAISING GOODS

SUPPORT JSB WITH YOUR
PURCHASE



Fundraising Goods

Support JSB by purchasing a Kyoto-Boston [sister cities](#)-themed tote bag designed by Randall Imai or a Boston-Japan T-shirt/sweatshirt designed by Marie Romano!

Click to see all our goods and to place orders. All proceeds go towards fundraising for the Japan Society of Boston.

Shop

Japan - Massachusetts Sister Cities Page

In addition to Boston and Kyoto, did you know the state of Massachusetts has 13 [sister city relationships](#) with Japan?

Massachusetts's sister state/prefecture partnership with Hokkaido is celebrating its 35th anniversary this year!

Check out our webpage below to learn more.

Website

Japan-Massachusetts Sister Cities



College Hub

JAPAN SOCIETY OF BOSTON



The JSB College Hub

The JSB College Hub is our webpage for Japan-related college events, opportunities, and resources for young adults pursuing Japanese studies!

Check out the hub below for more information, to view our current listings, or to submit an event or opportunity!

Website

JSB Programming

土佐清水市
TOSASHIMIZU CITY

日本協会
JAPAN SOCIETY
OF BOSTON

TOSASHIMIZU:
A JOURNEY WORTH TAKING,
A PLACE WORTH STAYING
with Jason Sardinha

Free online webinar
Thursday, February 27th, 2025 | 6PM EST

Tosashimizu: A Journey Worth Taking, A Place Worth Staying **Thursday, February 27th, 2025 - 6:00 PM EST** **Online**

Please join us for a special event in collaboration with the City of Tosashimizu! We present this program in efforts to combat current issues of over-tourism in Japan by highlighting the unique charms of smaller towns and less visited areas.

Our speaker, Jason Sardinha, is a Massachusetts native who went to Japan through the JET Program, never expecting that he would one day call Tosashimizu home. Though it takes time to reach Tosashimizu, this town has a charm that draws people in—just as it did for Jason. Through his journey and life in Tosashimizu, Jason will share what makes this place so special, and its unique connection to our state of Massachusetts.

Join us as we explore the beauty, history, and deep connections that make Tosashimizu a journey worth taking, and learn why it is a place worth staying!

This is a free, hour-long presentation with Q&A hosted on Zoom.
Registration is required.

Register

A promotional banner for the Foundry Festival 2025. The banner features a stylized illustration of a woman's face in profile, wearing a crown and a necklace, set against a dark background. The text on the banner includes: "FOUNDRY FESTIVAL 2025", "February 15-22", "101 Rogers St, Cambridge", "A week of free workshops, art, and activities celebrating resilience.", "move with us • create with us • learn with us", "Connect with diverse communities, create together, and engage the whole family.", "Offerings & registration via link below", "cambridgefoundry.org/festival", and "857-998-2063". There is also a small logo for the Foundry and a credit to the artist, Ckylah Lee.

FOUNDRY FESTIVAL 2025
February 15-22
101 Rogers St, Cambridge

A week of **free workshops**, art, and activities celebrating **resilience**.

move with us • create with us • learn with us

Connect with diverse communities, **create** together, and **engage** the whole family.

Offerings & registration via link below

cambridgefoundry.org/festival
857-998-2063

Art by Ckylah Lee

Foundry Festival 2025
February 15 - 22, 2025
The Foundry
101 Rogers St., Cambridge

JSB will have a free origami table in the community hall from 1-3pm on Tuesday, February 18th. Learn how to make origami daruma or lotus flowers, both traditional Japanese symbols of resilience. No registration required and open to all ages.

Visit The Foundry in East Cambridge from Saturday, February 15 to Saturday, February 22 for the third annual Foundry Festival! Immerse yourself in a week of free public programming and create connections with diverse communities. All ages and skill levels are welcome to participate in as many activities as you are excited about.

This is a great chance to engage the family over the February school break!

Info

LECTURE AND DEMONSTRATION WITH THE TAIKO DRUMMERS FROM KODŌ

SATURDAY, MARCH 8TH, 2025 | 7PM
BOSTON LATIN SCHOOL, 78 AVENUE LOUIS PASTEUR, BOSTON, MA



Lecture and Demonstration with the Taiko Drummers from Kodō Saturday, March 8th, 2025 - 7:00 PM EST Boston Latin School 78 Avenue Louis Pasteur, Boston MA 02115

Join Japan Society of Boston and the Celebrity Series of Boston on March 8th at the Boston Latin School for a unique and exciting lecture and demonstration by Kodō, the award-winning Japanese Taiko Ensemble.

At this session, members of Kodō will introduce an in-depth story behind their artistry and musicality, as well as diving deeper into one particular performer, Moe Niiyama, as she talks about her taiko journey for the first time in the United States. The session will also have musical elements that will engage with the audience rhythmically, and there's no substitute for the feeling of the in-person experience. Be there when they fill the Boston Latin School with their propulsive music and movement!

Kodō's upcoming Symphony Hall Concert will be on Sunday, March 9th at 5pm. Tickets are available at the Celebrity Series of Boston [website](#).

JSB members can get 10% off on up to 4 tickets, valid from noon on Oct 29, 2024 through Feb 19, 2025 using the discount code on the [member only portal](#).

Register



Hiroshima-style Okonomiyaki

Oûchigohan!

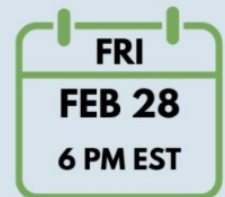
おうちはん!

Online Cooking Class via ZOOM

Special guest chef "Meg"



OTAFUKU



\$10 | JAS/JS Members
\$15 | Non-members



□□□□□□ Ouchigohan

Hiroshima-Style Okonomiyaki
Friday, February 28th, 2025 - 6:00PM EST
Online

Get ready to experience the flavors of Hiroshima from the comfort of your own kitchen! JASNC is thrilled to host this month's special Ouchigohan program featuring Hiroshima-style Okonomiyaki, a savory Japanese pancake layered with noodles, cabbage, a crepe-like base, and bean sprouts with savory sauces and delicious toppings. This interactive, family-friendly online cooking class will be led by Guest Chef Megumi (aka Meg) Gomez from Otafuku, the renowned Japanese sauce manufacturer. Meg, originally from Hiroshima, brings a deep passion for sharing authentic Japanese cuisine and will guide you step-by-step through the process of creating this iconic dish.

We are excited to partner with Table for Two and Otafuku for this unique culinary experience. Perfect for all skill levels, this program offers a fun and interactive way for families to cook together and explore Japanese cuisine. Register now to secure your spot! Only one registration needed per household.

JSB members visit the [member only portal](#) for discount code.

Register



Join the JSB Language Room
A Japanese and English Virtual Language Exchange

 JAPAN SOCIETY OF BOSTON

Sponsored by:

 **Temple University**
Japan Campus

JSB Language Room
Friday, February 21st, 2025 - 6:00 PM EST
□□□□□□2□22□□□□□□8□□
Online

Practice your Japanese (or your English) at our next online Japanese / English language exchange. Our monthly language room is sponsored by [Temple University, Japan Campus \(TUJ\)](#). TUJ is the oldest and largest foreign university in Japan.

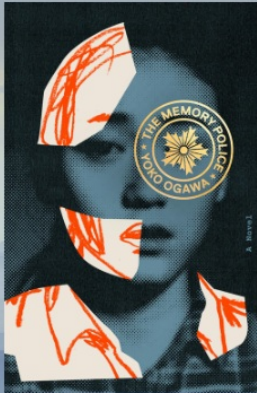
Theme: Valentine's Day (□□□□□□□□)

Register

Programs for JSB Members

The following events and clubs are limited to Japan Society of Boston Members. Interested in joining but not yet a member of the Japan Society of Boston? Consider [becoming a Member](#) today! *Please note that online only members can attend the online member only events, but not the in-person member events.

Join our community of hundreds of Japan enthusiasts from Boston and beyond and support the Japan Society of Boston's mission to inspire curiosity, connection, and community. We are sustained by your donations.



JAPAN SOCIETY OF BOSTON MEMBER

BOOK CLUB

THE MEMORY POLICE
BY YOKO OGAWA

JSB Book Club

Wednesday, February 26th, 2025 - 6:00 PM EST

Online

Do you love Japanese literature? The JSB Book Club will be meeting to discuss *The Memory Police* by Yoko Ogawa.

Acclaimed writer Yoko Ogawa's 1994 science fiction novel takes place on an island reminiscent of settings from George Orwell's *Nineteen Eighty-Four* and is influenced by the melancholy and dream-like tones of modernist writer Franz Kafka.

Find a copy [here](#). You are welcome to read any translation.

Register

Between the Lines

A Monthly Discussion on **Medieval Japanese Women's Literature** for JSB Members every first Thursday of the month.



Between the Lines Thursday, March 6th, 2025 - 6:00 PM EST Online

Join us to discuss some of the greatest classics of medieval Japanese literature, written by women authors!

Next we will be reading a classic Heian period tale about the life of Murasaki Shikibu, the author of *The Tale of Genji*. *The Diary of Lady Murasaki* is by Murasaki Shikibu, translated by Richard Bowring.

You may find a copy of the book [here](#). Full text should be read in advance of the meeting.

Register

JSB Film Club Wednesday, March 26th, 2025 - 6:00 PM EDT Online

Tokyo Sonata, directed by Kiyoshi Kurosawa (no relation to Akira Kurosawa), is a drama film about a Japanese man hiding the secret of his unemployment from his family. It won the Prix Un Certain Regard at the Cannes Film Festival.

Watch the [Trailer](#). Films should be viewed in advance of our meetings.

Signature Content from JSB



#MEMBER HIGHLIGHTS

Japan Society of Boston

japansocietyboston.org/

Member Highlight

The Japan Society of Boston is pleased to introduce you to the wonderful members of our community through this blog series. Each month we feature a JSB member and ask them to share with us their Japan Story.

This month: Evelyn Flynn

"I became a fan of samurai films (*jidaigeki*) and an actor, Toshiro Mifune. Peter Grilli, past President of the Japan Society of Boston, brought Mifune to the MFA for a retrospective of Kurosawa films. While I was thrilled to see my favorite actor in person, I learned that there had been a dinner in his honor at JSB the previous evening. The next day I became a member of JSB."



[Evelyn at Ginkaku-ji, Kyoto in 1997]

Article

JSB MEETS JET ALUMNI

An interview series on alumni experiences in Japan



JSB Meets JET Alumni

As part of our partnership with the [United States Japan Exchange and Teaching Alumni Association](#) (USJETAA), the Japan Society of Boston features a new JET Alumni in our monthly blog!

This month's JET Alum is Jason Sardinha (Kochi 2011-2016).

"After completing my five-year tenure as an ALT in Tosashimizu, I was fortunate to gain a position in the city's Tourism Department. After a recent departmental shuffle, I now work in the Planning and Finance Department, which, among other things, oversees the sister city relationship with Fairhaven and New Bedford, Massachusetts."

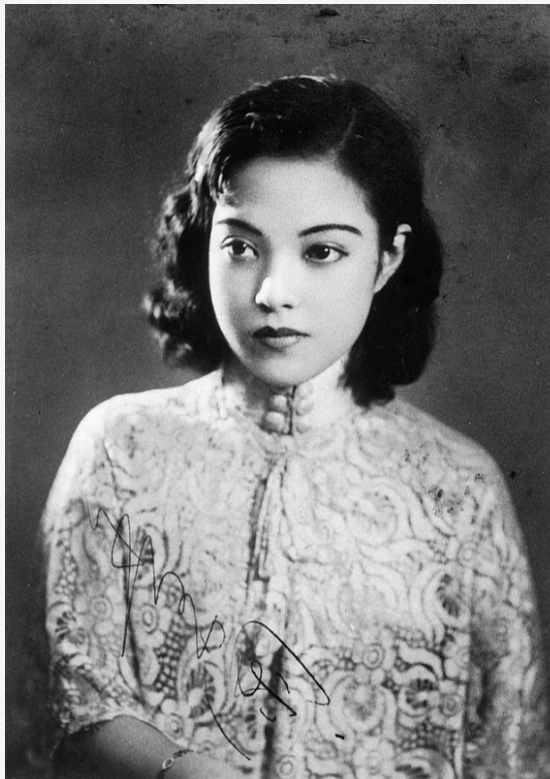
If you'd like to learn more about the city of Tosashimizu and listen to Jason speak more about his experience, check out our [upcoming program](#) in collaboration with Jason and the City of Tosashimizu!



Article

FAMOUS IN JAPAN

Celebrities from Around the World



Famous in Japan

Studying individuals from around the world who are famous in Japan, both past and present.

This month we are featuring Yoshiko Yamaguchi, also known by Ri Koran, who was a famous actress and singer. She later went on to become a journalist and politician in Japan.

[Article](#)

Other Japan-Related Events



SMITH COLLEGE, SEELYE HALL, ROOM 201

SONGS OF KAMUI

FREE FILM SCREENING

February 28th, 2025 | 7pm

***Songs of Kamui* Film Screening**
Friday, February 28th, 2025 - 7:00 PM

Smith College, Seelye Hall. Room 201
2 Seelye Dr #1, Northampton, MA 01060

Songs of Kamui (2023) is based on the true story of Chiri Yukie (1903-1922), a young Ainu woman who worked to preserve the Ainu language and folklore, publishing the first Japanese translation of an Ainu epic poem, "Kamui Yukar."

Directed/Screenplay by Hiroshi Sugawara; Starring Mizuki Yoshida, Ayumu Mochizuki.

Sponsored by the Five College Center for East Asian Studies, Smith College EALC, Massachusetts-Hokkaido Association.

The screening is free and open to the public. Watch the [trailer](#).

There will be a related webinar with the film's director on March 3rd, 7pm ET. See details below. Register [here](#).

**"Ainu Spirits Singing: The Living World of Chiri Yukie,"
with Sarah Strong, Bates College.**

Chiri Yukie (1903-1922), a young Ainu woman who worked to preserve Ainu language and folklore, published the first Japanese translation of an Ainu epic poem, "Kamui Yukar." This webinar is part of the celebration of the 35th anniversary of the Massachusetts Hokkaido Association and sister state relationship.

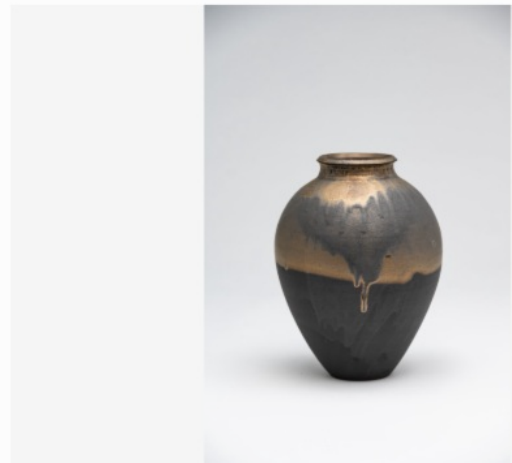
Info

Back to the Center

New Work by Yoshinori Hagiwara

01 March through 04 May 2025

EXHIBITION CATALOGUE



Back to the Center
New work by Yoshinori Hagiwara
On display March 1st through May 4th, 2025
Pucker Gallery

Info



ARTIST TALK WITH YOSHIDA AYOMI

In-person
Tuesday, March 4, 2025 | 6pm

Artist Talk with Yoshida Ayomi Tuesday, March 4th, 2025 - 6:00 PM EST Harvard Art Museums

This event encourages but does not require registration; see further details below.

Join Harvard Art Museums for an in-depth discussion featuring artist Yoshida Ayomi in conversation with curatorial fellow Lillian Wies. Yoshida's work deals with themes of legacy, transience, and the environment, and she is known for her large-scale, intricate installations that incorporate traditional Japanese printmaking techniques while also pushing the boundaries of the medium. Yoshida is the fourth generation of the Yoshida family of artists, each of whom has significantly shaped modern Japanese painting and printmaking.

Free admission, but seating is limited and registration is encouraged. You can register by clicking on the event on [this form](#), beginning Saturday, February 22, after 10am.

The lecture will take place in Menschel Hall, Lower Level. Doors will open for seating at 5:30pm from the Broadway entrance. See page for more details.

Co-sponsored by the Harvard Art Museums and Harvard University's Edwin O. Reischauer Institute of Japanese Studies.

Info



Kodō: Warabe
Sunday, March 9th, 2025 - 5:00 PM EDT
Symphony Hall

In Japanese, the word Kodō holds a double meaning. Written one way, it can be translated as “heartbeat,” the primal source of all rhythm. Written another way, the characters of the name read “drum” and “child,” reflecting the company’s mission: to play the drums with the simple heart of a child.

For the company’s 40th anniversary, they created two programs, Tsuzumi and Warabe, based on the two syllables of the name. The former program, a thunderous sold-out sensation at Symphony Hall in 2023, was inspired by the “drum” character.

Kodō returns to the Celebrity Series this year with the latter, Warabe—a soul-stirring program evoking the “child” character. In this performance, Kodō’s drummers, singers, and other traditional instrumentalists look to the group’s classic repertoire and early days, blending simple forms of taiko expression that celebrate their unique sound, resonance, and physicality.

JSB members can get 10% off on up to 4 tickets, valid from noon on Oct 29, 2024 through Feb 19, 2025 using the special link or discount code on the [member only portal](#).

[Tickets](#)



Midori, violin
Özgür Aydın, piano

Celebrity Series of Boston

at Groton Hill Music Center's Meadow Hall (Groton, MA)
& NEC's Jordan Hall (Boston, MA)

📍 Meadow Hall - Groton Hill Music Center 🗓️ Thu. March 6, 8:00 PM
📍 NEC's Jordan Hall 🗓️ Fri. March 7, 8:00 PM

Midori Concert
Thursday, March 6th, 2025 - 8:00 PM EST
Meadow Hall - Groton Hill Music Center
122 Old Ayer Rd, Groton, MA 01450

Renowned for the expressive agility of her playing, violinist Midori returns to the Celebrity Series for the first time since 2012 with a program that lends her finely honed touch to songs of mourning and lamentation across cultures.

Drawing on her ability to summon finesse and purity as readily as warmth and power, Midori builds her program around Poulenc’s Sonata for Piano and Violin, dedicated to

the memory of Spanish poet Federico García Lorca. Inspired by the poet's comparisons of countrywide weeping in Civil War-era Spain to the sound of "an immense violin," Midori expresses a musical tale of loss and bereavement.

Performing Poulenc's Sonata alongside Che Buford's new work Spirituals, Brahms' Violin Sonata No. 1, and Ravel's "Kaddish" and "Tzigane," Midori gives voice to expressions of sorrow that depict, as she puts it, "spiritual verities that tie humanity together."

JSB members can get 20% off on up to 4 tickets, valid from noon on Oct 29, 2024 through Feb 19, 2025 (Boston/Jordan Hall performance only) using the special link or discount code on the [member only portal](#).

Tickets

High School Summer Program

JULY 30 - AUGUST 7, 2025

JAPAN



Japanese language and an elective course modeled after our undergraduate courses

- 310,000 JPY (+20,000 JPY Registration Fee applies)
- First 20 students to be accepted and complete the program fee by March 1 are eligible for a 20,000 JPY discount
- Cost includes all accommodation, meals, and program-related events
- Does not include airfare and travel insurance

 **Temple University**
Japan Campus

Temple University, Japan Campus (TUJ)
Admissions Counseling Office
Email: ac@tuj.temple.edu
www.tuj.ac.jp/hs-summer-program



Temple University Japan Campus High School Summer Program 2025

TUJ invites high school students to a summer of language and cultural experiences in Tokyo. The 8-night program includes a unique mix of Japanese language and elective classes.

With adventures in Tokyo, an overnight excursion to Kyoto and TUJ KYOTO, and a trip to DisneySea, this will be your summer to remember!

Info



Showa Boston Friendship Program August 4-8, 2025 - 8:30-4:30 PM

Do you know any 5th or 6th graders who would like to meet Japanese students for a fun week of cultural exchange in and around Boston this summer? If so, we have a fantastic program for them!

Some program highlights include teacher-led morning instruction, group projects, hands-on cultural activities, field trips, pen pals, and immersive activities to exchange culture and foster friendship.

Program fee is \$700 and includes lunch, transportation, and all admissions. A \$50 non-refundable deposit towards the fee is required at time of registration. Returning Friendship participants can save \$50! And new Friendship participants can register by February 28 and save \$50!

Secure your spot today and make this summer unforgettable!

Please contact friendship@showaboston.edu for questions and more information.

Apply

Proust and The Tale of Genji

In-person Lecture

PLIMPTON ROOM (133), BARKER CENTER, 12 QUINCY STREET

FEBRUARY 18, 2025 | 11:30 AM - 1:00 PM

Proust and The Tale of Genji

Tuesday, February 18th, 2025 - 11:30 AM EST
Mahindra Humanities Center at Harvard

Speaker: J. KEITH VINCENT, Associate Professor of Japanese and Comparative Literature, Boston University

The Tale of Genji has drawn comparisons to Marcel Proust's *In Search of Lost Time* at least since the first volume of Arthur Waley's translation appeared in 1925. Both massive novels were the life work of their authors. In Japan, where Proust was translated early and often, his work served to awaken an interest among Japanese novelists in *The Tale of Genji*, while many Japanese Proustians cite their love of the *Genji* as having informed and intensified their understanding of Proust. In this talk, Professor Vincent will discuss these and many other resonances between these two great works written a thousand years apart, and suggest ways in which reading them alongside each other can enhance our enjoyment and shed new light on each of them.

Co-sponsored by the [Edwin O. Reischauer Institute of Japanese Studies, Harvard University](#)

Info

MFA Boston

Opens May 11

Arts of Japan

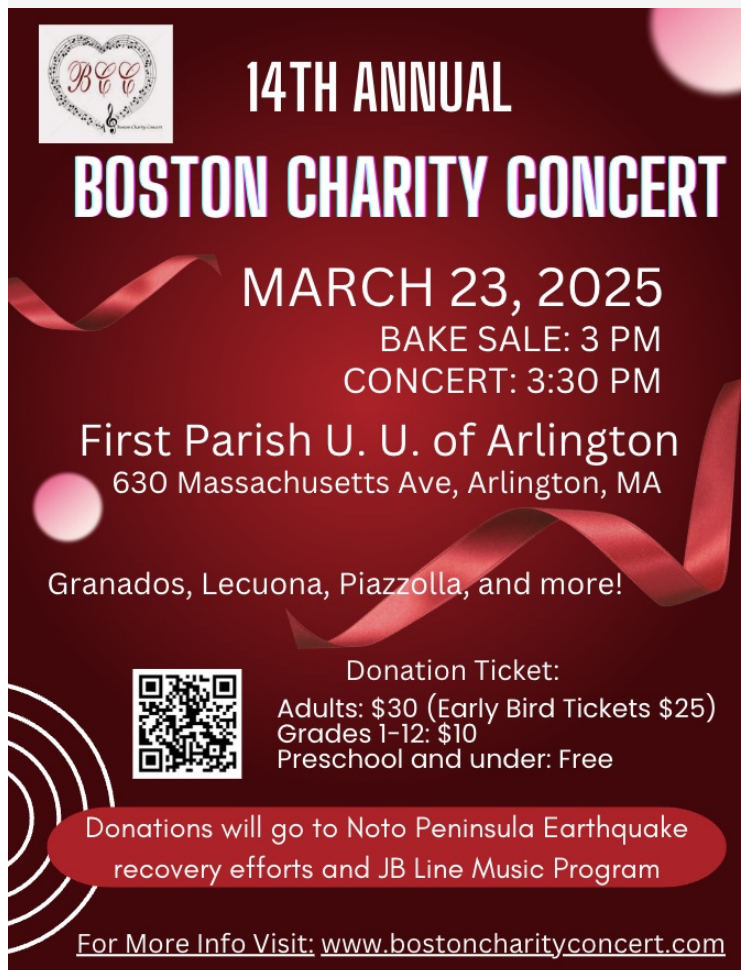


Arts of Japan
Starting May 11, 2024

The MFA has one of the most comprehensive collections of Japanese art anywhere in the world. Reimagined galleries explore Japan's art and visual culture from the 7th century to today, including painting, sculpture, decorative arts, and selections from the Museum's vast collection of ukiyo-e prints. Evocative spaces include the renovated Japanese Buddhist Temple Room, which opened in 1909, and an adaptation of a traditional tea room, with tatami mats and an alcove. Multimedia displays illuminate performative art forms, such as Nō theater, bringing their drama to life.

The new space for the Museum's unparalleled Japanese collection—which was the first of its kind in America when established in 1890, and now holds about 100,000 objects—will change regularly, giving visitors the opportunity to see even more works in a setting that honors and celebrates Japan's rich history and cultural legacy.

Info



 **14TH ANNUAL**
BOSTON CHARITY CONCERT

MARCH 23, 2025
BAKE SALE: 3 PM
CONCERT: 3:30 PM

First Parish U. U. of Arlington
630 Massachusetts Ave, Arlington, MA

Granados, Lecuona, Piazzolla, and more!

 Donation Ticket:
Adults: \$30 (Early Bird Tickets \$25)
Grades 1-12: \$10
Preschool and under: Free

Donations will go to Noto Peninsula Earthquake recovery efforts and JB Line Music Program

For More Info Visit: www.bostoncharityconcert.com

This year's program will feature works inspired by Spain, including pieces by Granados and Piazzolla. You'll enjoy rich and vibrant music that will touch your heart and create a memorable experience. The concert will also include ensemble performances by children, offering them an opportunity to share the joy of making music together while delivering wonderful performances.

Don't miss the popular bake sale, featuring a variety of homemade treats, including Japanese delicacies. From traditional sweets to special items, the bake sale has become a favorite part of the event, so be sure to stop by early!

Proceeds from the event will support relief efforts for the Noto Peninsula Earthquake and the Japanese Bostonians Support Line's music programs.

Tickets

Please send information about Japan-related events in Boston to info@japansocietyboston.org to help us feature select events.



[The Japan Society of Boston, Inc. | \[www.japansocietyboston.org\]](http://www.japansocietyboston.org)

THE JAPAN SOCIETY OF BOSTON, INC. | 50 Milk Street 16F | Boston, MA 02109 US

[Unsubscribe](#) | [Update Profile](#) | [Constant Contact Data Notice](#)



Try email marketing for free today!