

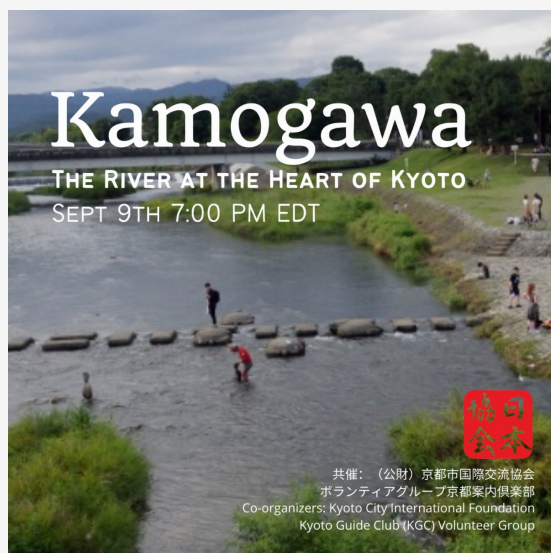




**Wednesday, August 17th, 2022 - 8:00 PM EDT / 5:00 PM PDT**

Join us on Zoom for this special collaboration with the **Japan Society of Northern California** where we will be learning all about yōkai, supernatural entities and spirits that appear in many Japanese tales. Yōkai play an important role in modern Japan: not only do they appear in folklore narratives told to children, but they also pop up in popular video games, manga, and anime.

[Register Here](#)

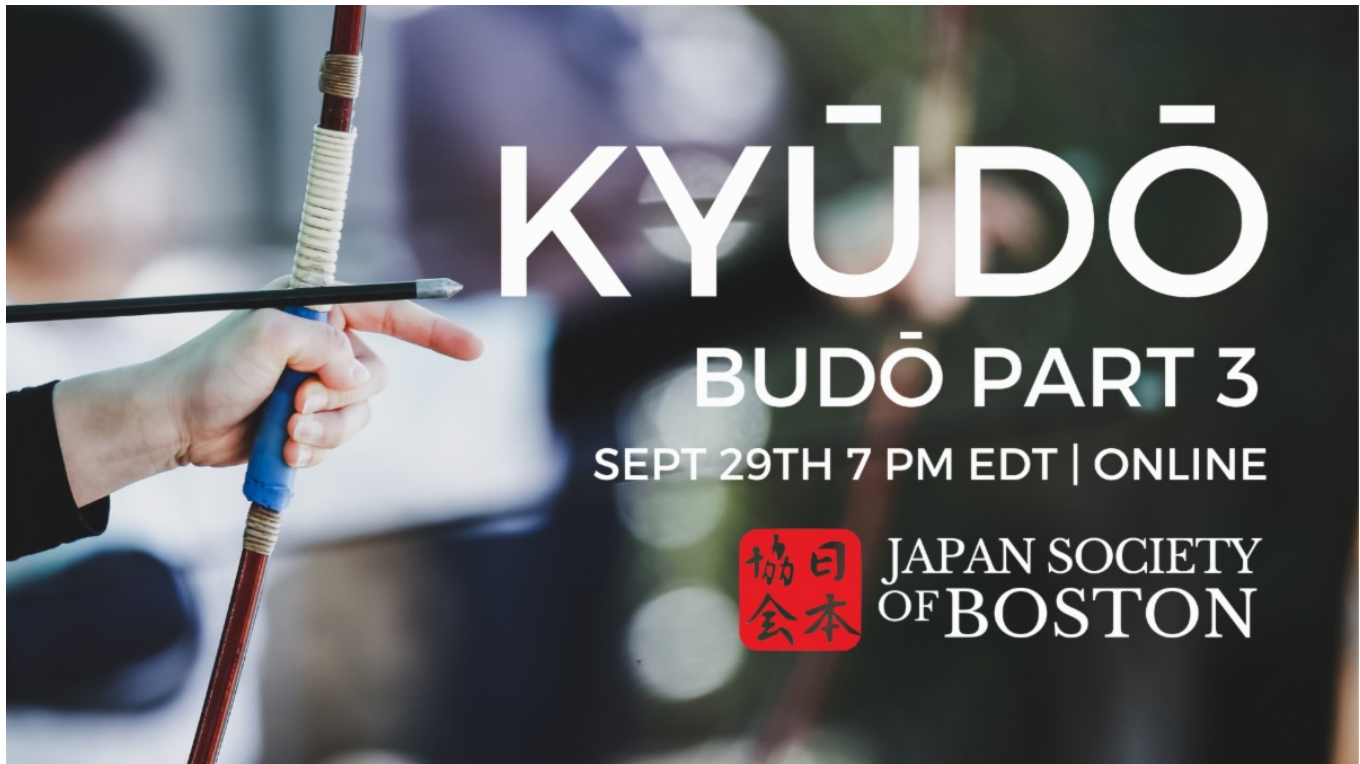


**Friday, September 9th, 2022 - 7:00 PM EDT**

Kyoto locals and KGC volunteers will explore why the Kamogawa River is such a central spot for rest and recreation in Kyoto, even more so than the Seine in Paris or the Thames in London.

Join the Kyoto Guide Club (KGC) for a virtual introduction to this communal locale in Japan's most traditional city.

[Register Here](#)



**Thursday, September 29th, 2022 - 7:00 PM EDT**

Join Byakko Kyudojo for an introduction to Kyudo, the centuries-old practice of Japanese archery. This is the third installment in our BUDŌ Series which features traditional Japanese martial arts.

The event will provide a window into the precise yet deceptively simple practice of Kyudo, including an introduction to common equipment and basic techniques such as the “Seven Coordinations.” Attendees will also have the opportunity to ask questions about the history of Kyudo and its everyday mental and physical benefits. We hope you will join us!

[Register Here](#)



**August - September 2022**

**The Coolidge Corner Theater and the Japan Society of Boston Present**

### **Samurai Summer II:**

Samurai Summer debuted in 2021, paying homage to the Coolidge Corner Theater's history of programming Japanese films in the '70s and '80s, with samurai stories being among the most popular.

In 2022, Samurai Summer II pairs classic *chanbara* (sword fighting) movies with films from the West that they've influenced. Beginning with *The Hidden Fortress* and *Star Wars: Episode IV - A New Hope*, we'll see how the themes in samurai films are interpreted, borrowed, and, in some cases, outright stolen.

**Tuesday, August 16th:** *The Hidden Fortress* (1958)

**Wednesday, August 17th:** *Star Wars: Episode IV - A New Hope* (1977)

**Tuesday, August 23rd:** *Onibaba* (1964)

**Wednesday, August 24th:** *Kill Bill Volumes 1 & 2* (2003 & 2004)

**Tuesday, August 30th:** *The Tale of Zatoichi* (1962)

**Wednesday, August 31:** *Ghost Dog: The Way of the Samurai* (1999)

**Tuesday, September 6th:** *Ran* (1985)

**Wednesday, September 7th:** *A Fistful of Dollars* (1964)

[More Information Here](#)



# The JSB Poetry Club

*Autumn Past & Present:  
Poetry of the Seasons*



September 13th 6:00 PM EDT

**Tuesday, September 13th, 2022 - 6:00 PM EDT**

As the heat of summer dissipates and the cooler temperatures of autumn set in, we'll enjoy an evening of classical Japanese poems to mark this seasonal shift. We'll explore some autumn haiku from poets of the past, learn a bit about the various *kigo*, or seasonal words, which the poets drew upon, and share a few contemporary poems of the autumn experience.

[Register Here](#)

## Join the JSB Language Room

A Japanese and English  
Virtual Language Exchange



Sponsored by:



**Friday, September 16th, 2022 - 6:00 PM EDT**

□□□□□□9□17□□□□□□7□□9□□

Practice your Japanese (or your English) at our next online Japanese / English language exchange. Our theme this session is: **Favorite Songs**

Our monthly language room is sponsored by **Temple University, Japan Campus (TUJ)**. TUJ is the oldest and largest foreign university in Japan. For more information, please visit their website: <https://www.tuj.ac.jp/ug>

[Register Here](#)

## Programs for JSB Members

# Between the Lines

A Monthly Discussion of **the Tale of Genji** for JSB members held on the third Tuesday of the Month



**Tuesday, August 16th, 2022 - 6:00 PM EDT**

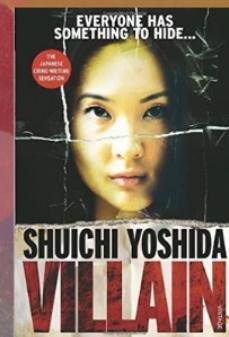
Join us to discuss *The Tale of Genji* by Murasaki Shikibu. We will be discussing **chapters twenty-six through thirty**. This event is held on the third Tuesday of each month through September.

[Register Here](#)

JAPAN SOCIETY OF BOSTON MEMBER

# BOOK CLUB

VILLAIN BY SHUICHI YOSHIDA



**Wednesday, September 28th, 2022 - 6:00 PM EDT**

Do you love Japanese literature? The JSB Book Club will be meeting to discuss *Villain* by **Shuichi Yoshida**. The purpose of the JSB Book Club is to strengthen the community of Japan enthusiasts by coming together to discuss Japanese literature.

[Register Here](#)

## JSB Meets JET Alumni:

As part of our partnership with the [United States Japan Exchange and Teaching Alumni Association](#) (USJETAA), the Japan Society of Boston features a new JET Alumni in our monthly blog!

**This month:**

**Ian Malloy** who just came back from a year on JET in **Ishikawa Prefecture!**



[Read the Blog](#)

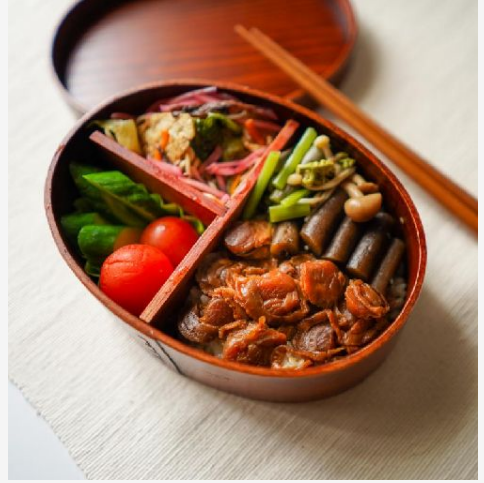
## Other Japan Related Programming

### Special Offer from Kokoro Care Packages for the JSB Audience!

Kokoro Care packages is offering the JSB audience 10% off their **Ekiben (弁当)**: **Take a Trip to Japan with Train Station Bentos.**

Use discount code: **JASBOSTONEKIBEN** (order by August 31st)





[More Information](#)

---

**August 11th, 10:00 PM EDT: [Japanese Fashion During World War II | Australian Society for Asian Humanities](#)**

**August 30th, 9:00 PM EDT: [Virtual Stroll in Asakusa | JAS Chicago](#)**

**August-September: [A Counting: Boston-Cambridge Call for Participation | Ekene Ijeoma and Poetic Justice Group \(MIT\)](#)**

**September 22nd, 6:30 PM EDT: [From the Far East to Boston: Nichols Family Belongings from Asia | Nichols House Museum](#)**

**September 25, 2022, 2:00 PM EDT: [Japanese Tea Ceremony | The Art Complex Museum](#)**

---

**From the Archive**





Every month the Japan Society of Boston reaches into our archives to pull out a postcard that was sent back to us in the early years of our organization. This one was mailed to JSB in 1914 and depicts workers loading a ship with coal.

The back reads:

“The baskets are supposed to hold about 40# of coal. They pass up the line at a rate as high as 50 a min, for a few moments, but will not average more than 30 a min, if that. The coal is shoveled into baskets by men and passed up by women and boys. In 8 hours they put about 3000 tons of coal on the ship.”

[The Japan Society of Boston, Inc. | \[www.japansocietyboston.org\]](http://www.japansocietyboston.org)

THE JAPAN SOCIETY OF BOSTON, INC. | 50 Milk Street, 16F, Boston, MA 02109

[Unsubscribe info@japansocietyboston.org](mailto:info@japansocietyboston.org)

[Update Profile](#) | [Constant Contact Data Notice](#)

Sent by [info@japansocietyboston.org](mailto:info@japansocietyboston.org) powered by



Try email marketing for free today!